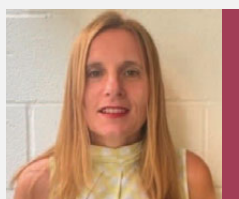


ACCESSIBLE ALLOTMENTS AND COMMUNITY POLYTUNNEL



Lorraine Jeffs, Town Clerk and General Manager at Whitehill Town Council in Hampshire, discusses the set-up of the council's new accessible allotment plots and the far reaching benefits of their community polytunnel.

Accessible allotment plots

Whitehill Town Council has developed accessible allotment plots at both of our allotment sites purchased through grant funding, and these have proven to be very popular with people with physical disabilities that affect mobility. This could include arthritis, injuries, inherited or acquired conditions. There are a number of raised beds of various dimensions that can be worked using a no or minimal dig system which will be shared by two allotment tenants, where you can grow fruit and vegetables from the raised beds.



A touch of the good life!

The council has also purchased a polytunnel using funding from East Hampshire District Council's (EHDC) Healthy New Town grant. The polytunnel is located in Bordon and has been available for use from May 2022, primarily by youth and community groups and schools in the Whitehill and Bordon area.

It is used as a horticulture project hub to grow floral displays, plants and food which are re-used in the town with the produce going to the Bordon Food Bank and to Abri to help where there are food shortages. This benefits children who require this type of outdoor learning and social environment



facility to obtain new skills. We aim for this to grow into our first climate change awareness hub, introducing solar panels to produce lighting for the structure, reuse of waste materials and usage of natural substances whilst showing children these techniques when using the polytunnel.